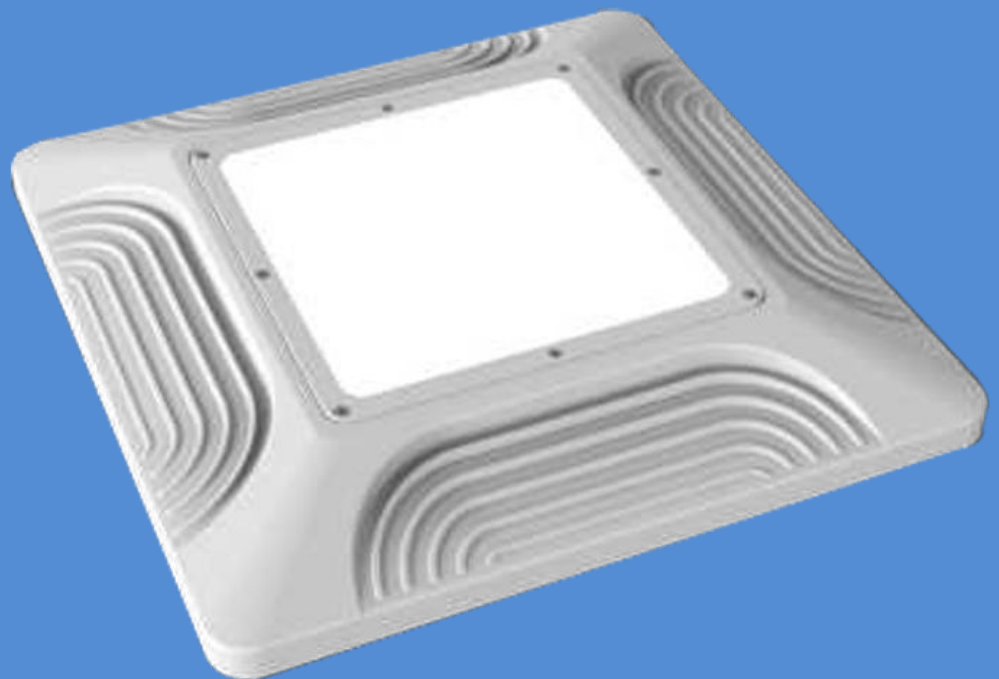


**LN Lighting technical data**

## **LED 140W CANOPY LIGHT**

**Lighting technical data**

**LED 140W CANOPY LIGHT is an alternative light source with longer life and uniformed light distribution**



## LN Lighting technical data

## LED CANOPY LIGHT

### LED CANOPY LIGHT



Model No.	Watts(W)	Light Output(lm)	Dimension(mm)	Light Color(K)	Beam Angle(Degree)
LN-CPXW140-U-N-QW-W-E-C-Q00	140±10%	14000-10%	382*382*117.5 MM	5000K	120

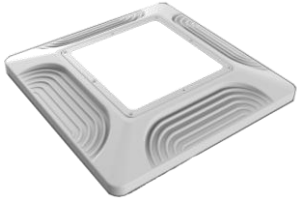
#### Technical Specifications

Item	Test Conditions	Min.	Typ.	Max.
Input Voltage(V, rms)	AC	100	220	277
Input Current(mA, rms)	AC(220V)	---	635	---
Input Power(W, rms)	AC(All)	---	140	---
Input Frequency(Hz)	AC	---	50Hz/60Hz	---
Power Factor(PF)	AC(All)	≥0.9		
Output Voltage(V)	DC	71	72	73
Output Current(A)	DC	1.73	1.73	1.73
Output Power(W)	DC	122	125	128

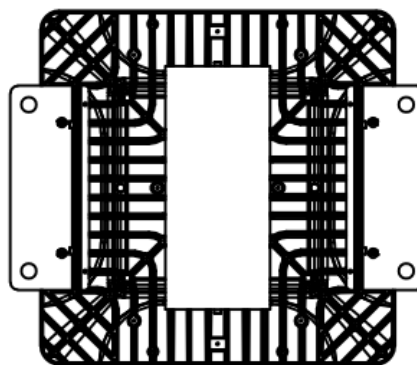
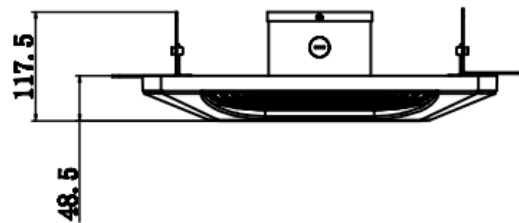
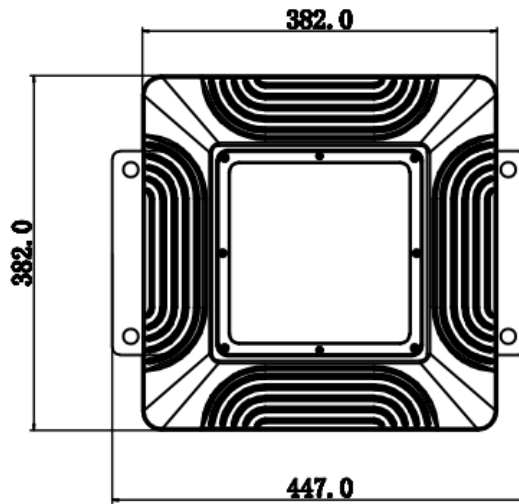
#### Environmental Requirements

Specifications	Values
Operational Temperature Range	-40~40℃
Preservation Temperature Range	-40~90℃
Operational Humidity Range	95% Rh or below (@-40~40℃)
Installation Area	Outdoor (Counter,Residential,Commercial,etc)

LED CANOPY LIGHT



Drawing



Material	
radiator: ADC12	Outdoors
lens: PC	

**LED CANOPY LIGHT**



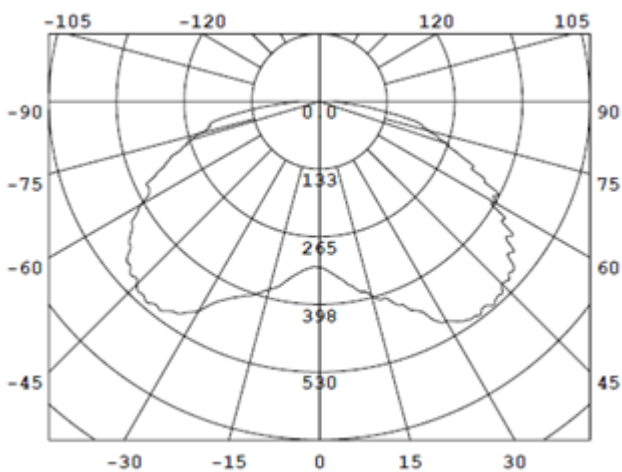
LN-CPXW140-U-N-QW-W-E-C-Q00

Category	Specifications	Unit
Watts	140	W
Lumens per Watt(Efficacy)	100	Lm/W
Light Output	14000	lm
Light Color(CCT)	5000	K
Beam Angle	120	°(degree)
Color Accuracy(CRI)	80	Ra
Product Weight	5.20	KG
Rating Life	50000	H

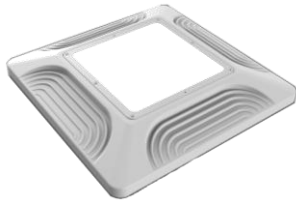
Luminance Intensity Distribution

Cone Lux Diagram

Base	Line interface	
Input Voltage(AC)	220	V



**LED CANOPY LIGHT**



Product Packaging	Specifications	Unit
Product Dimension	382*382*117.5 mm	mm
Net Weigh	5.20	Kg
Size of box	410*410*200MM	mm
Gross Weight	5.8	Kg
Size of Carton	410*410*200MM	mm
Qty/ Carton	1	PCS
Weight/ Carton	5.8	Kg

Revision History

MTime	Changed to: VER	Description of Change		
		Item	From	To