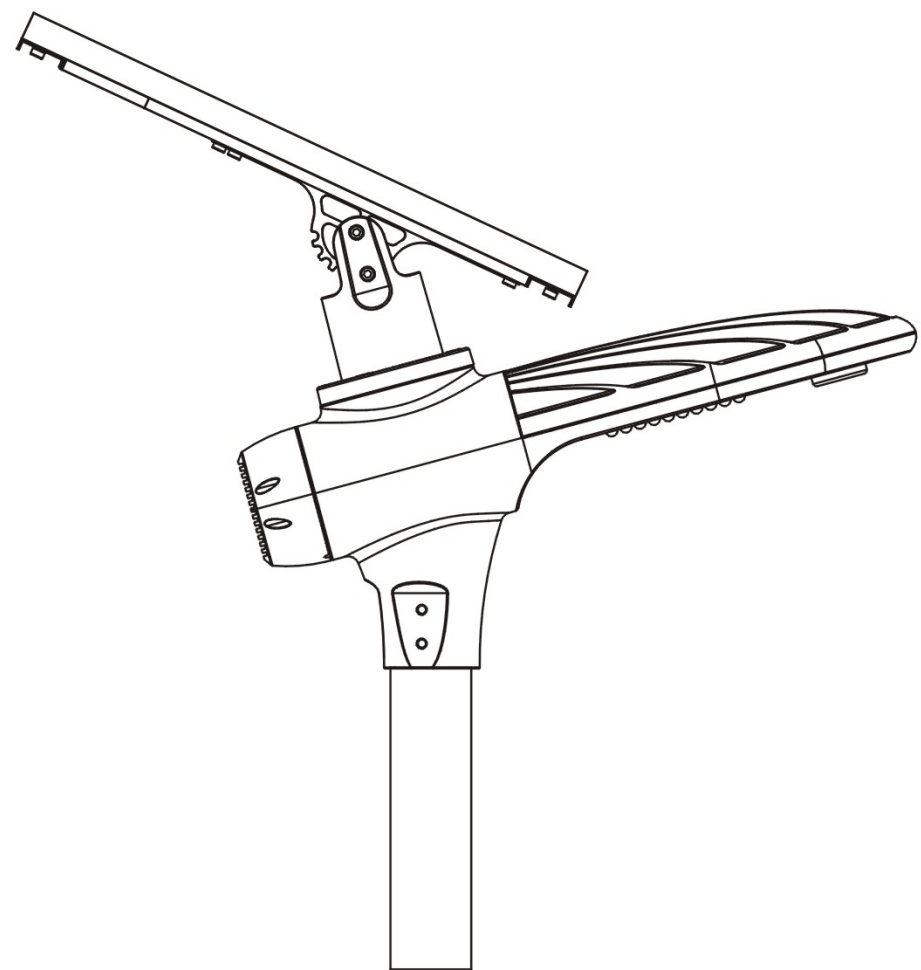
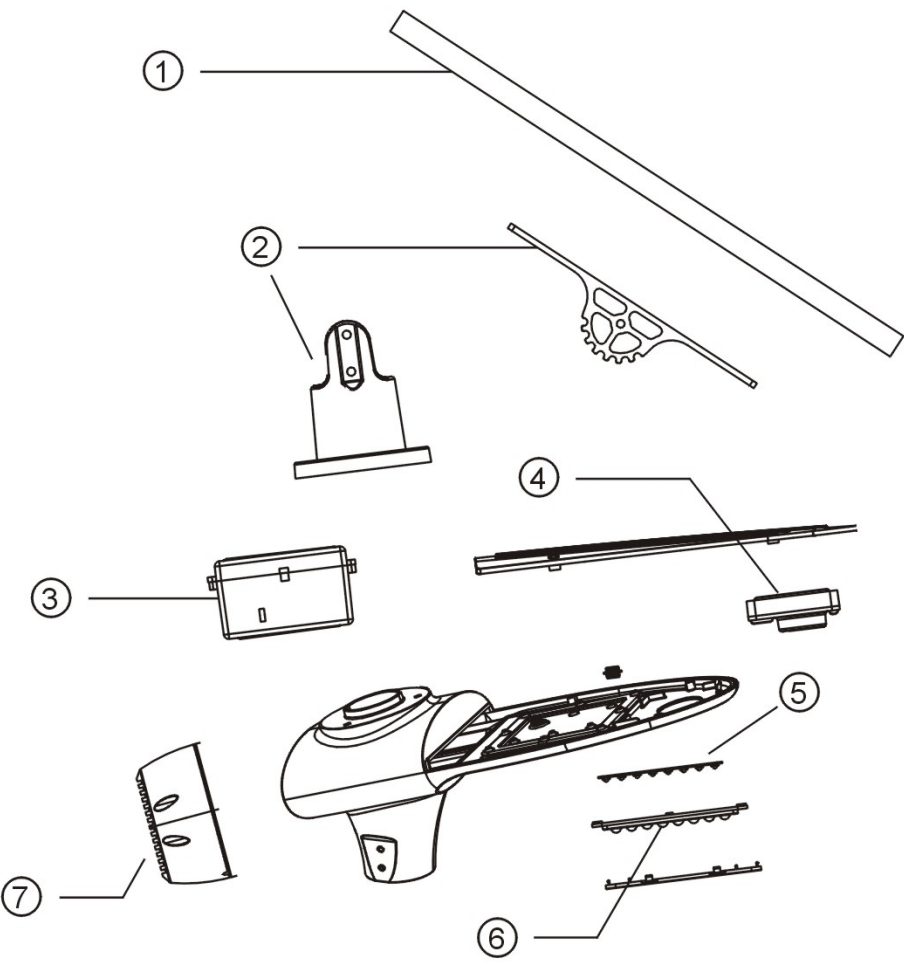


User Manual

All-in-one solar street light

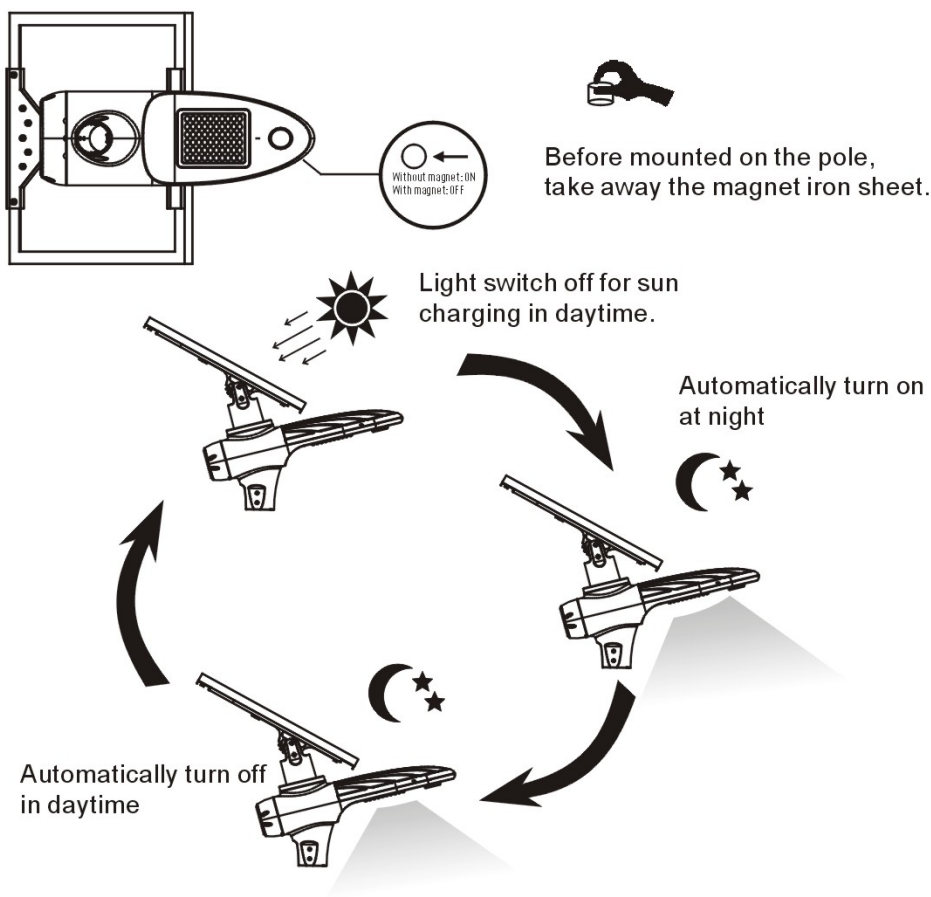


Structure specification:

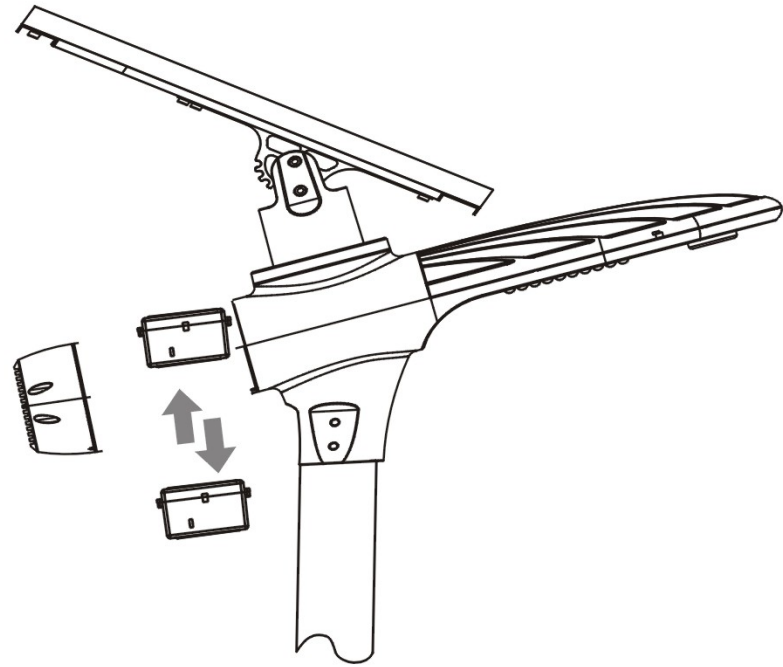


- | | |
|--------------------|-----------------------------|
| ① Solar panel | ② Adjustable solar bracket |
| ③ Lithium battery | ④ Controller+ motion sensor |
| ⑤ LED light source | ⑥ Lens |
| ⑦ Decorative light | |

How is the light working?



How to replace battery?



Battery replacement just need opening rear cover and replace with new battery directly, no need of taking apart whole luminary.

User manuel for remote controller:

DEMO: No matter day or night, light "on" for 1 minute.
Only for test use.

OFF: No matter day or night, light "OFF".

L: At night, 12hrs full power.

T: At night, 4 hrs full power + 8hrs 30%.

M: At night, 12hrs motion sensor control.

U: At night, 4hrs full power + 8hrs motion sensor control.



How to install the device?

