

**175** LM/W



# SLIM PRO

LED HIGH MAST LIGHT

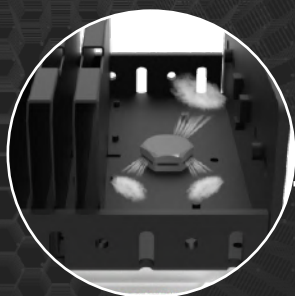
## 1 SILM PRO SERIES

SILM PRO series LED HIGH MAST LIGHT is built with robust Folding aluminum fin module housing and heavy duty anticorrosive surface treatment for sparking the beauty and improving lighting conditions of applied area. Originated by the demand for large field lighting applications, SILM PRO series flood lights can be extended to 1440W and fixture efficacy reaches to 165LPW, better brilliance, less energy consumption.

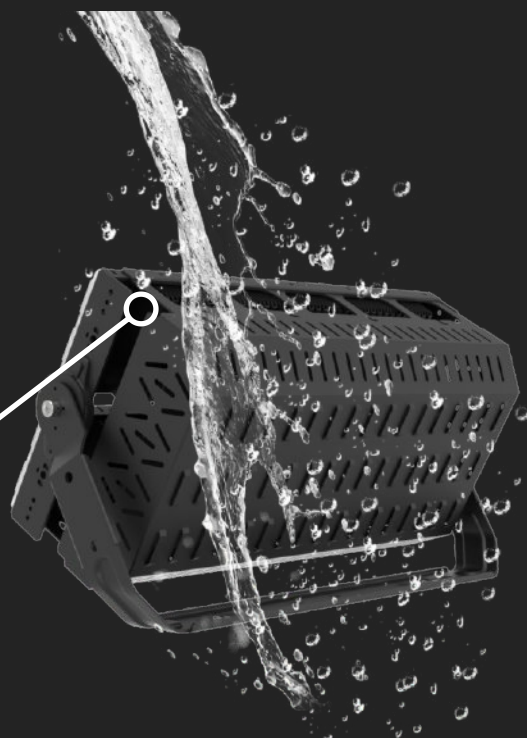


## 2 IP66 WATERPROOF & IK10

1. High luminaire efficiency up to 175Lm/w
2. Marine grade aluminum housing
3. IP66 and IK10 protection rate
4. 5 years warranty
5. Folding aluminum fin design which are very light weight

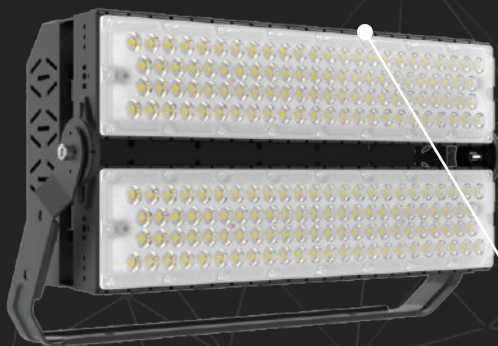


Each module of slim pro high mast lights series comes with M20 Waterproof Breathable Pressure Relief Vent Plug

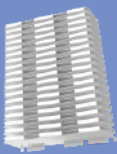


## 3 Folding aluminum fin design

Folding aluminum fin design which are very light weight. Increase the heat dissipation surface area by air cooling to dissipate heat and expand the contact area with air! It speeds up the spread of heat! Thermal effect is good! Compared with traditional die-cast aluminum and profile aluminum, which is heavier and there are certain safety risks. On the contrary, the aluminum fin heat sink are more secure.

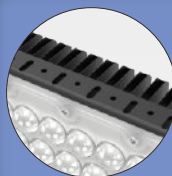


The module heat sink adopts the hemming design to prevent the deformation of the heat sink due to crash during the shipment and enhance the flatness and strength of the contact surface of the module heat sink.

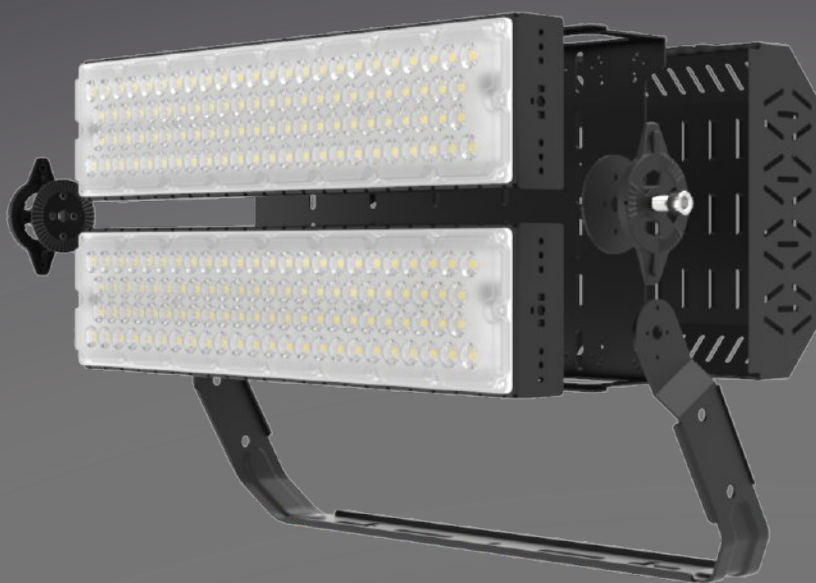


### Folding Aluminum Fin

High pure thermal conductive module Folding aluminum fin heat sink is made with high pressure Folding technology



The module heat sink adopts the hemming design to prevent the deformation of the heat sink due to crash during the shipment and enhance the flatness and strength of the contact surface of the module heat sink.



### Swivel Bracket

The fixing bracket is made of high-strength material and is bent at an angle of 45 ° to make the lamp body better installed.

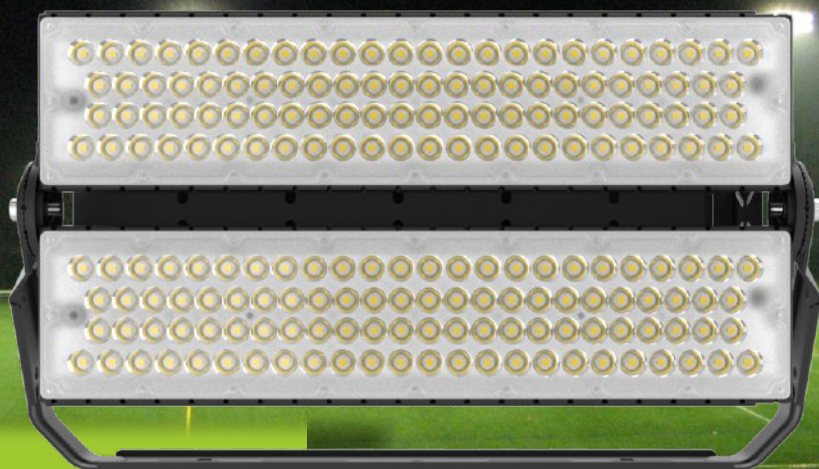
### PC Lens

The optical lens is made of PC, and the transmittance reaches 92%,reducing light loss,maximize the lumens on where it should be lit up and evenness, minimize lighting pollution to nature and human life.



# SLIM PRO SERIES

## LED HIGH MAST LIGHT 400W 480W



### Features

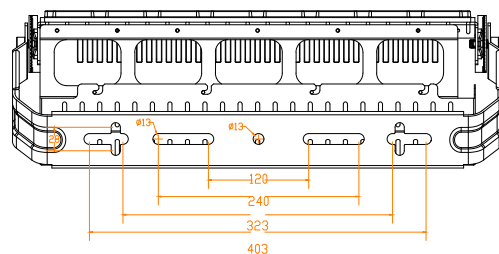
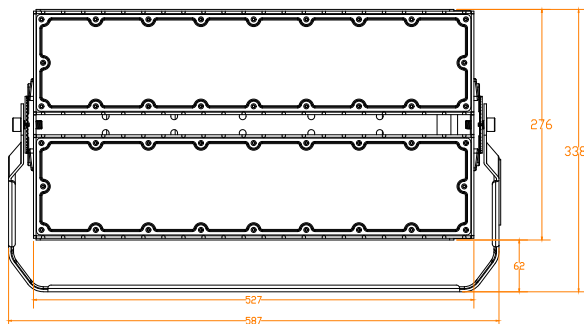
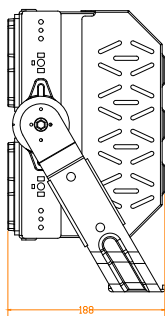
1. High luminaire efficiency up to 175Lm/w
2. Marine grade aluminum housing
3. IP66 and IK10 protection rate
4. 5 years warranty
5. Folding aluminum fin design which are very light weight
6. ETL DLC TUV CE CB SAA RoHS LM79 LM80 TM21 IK10 Salt Spray test approved

**5**  
Years  
Warranty

**50000** Hour  
Long Service Life

### Dimension

Unit:mm



# SLIM PRO

## LED HIGH MAST LIGHTS



- Light Source: Luminileds 5050
- Input Volt: 100-277VAC
- IP Rating IK Rating : IP66 & IK10
- Beam Angle: 10° 20° 40° 60° 90° 140x100° 135x60° (P50)
- Color Temp: 4000K 5000K
- Size: 587x338x188mm
- Weight: 10Kg
- 5 years warranty

Black Grey



FLAME RETARDED



SALT SPRAY TEST



100-277V



347-480V



Dimmable



50,000H



Adjust



-30~45°C



IK10



IP66

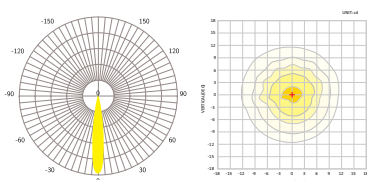


Folding Aluminum Fin

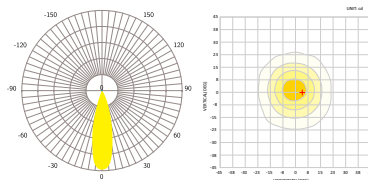
### Specifications

Model	LSHM-B400W-LV(XXX)	LSHM-B480W-LV(XXX)
Watt	400W	480W
Efficiency	175LM/W±3%	175LM/W±3%
Lumen	75,000Lm	84,000Lm
CCT	4000K 5000K	4000K 5000K
Driver(Optional #1)	Meanwell Driver 2pcs XLG-240-H-A	Meanwell Driver 2pcs XLG-240-H-A
Driver(Optional #2)	Meanwell Driver 2pcs ELG-240-48A	Meanwell Driver 2pcs ELG-240-48A

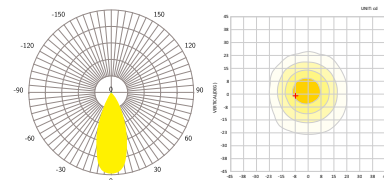
### Beam Angle



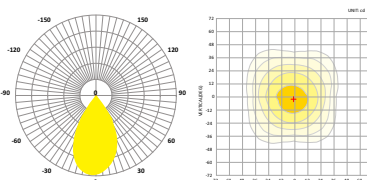
10°



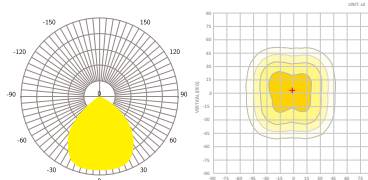
20°



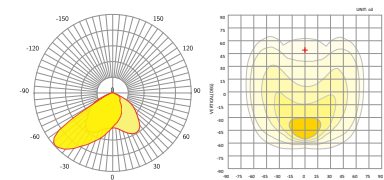
40°



60°

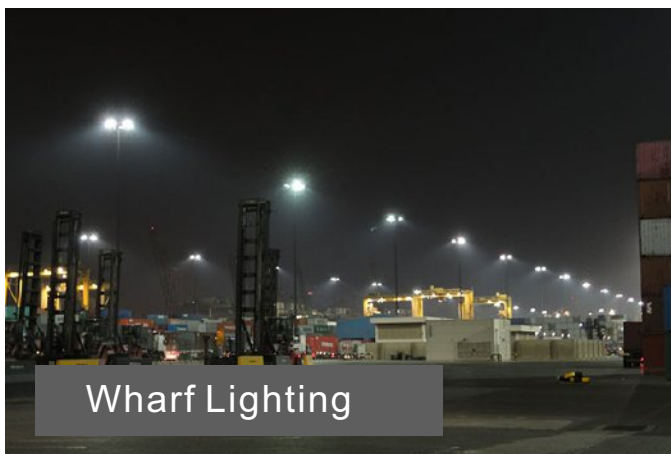


90°

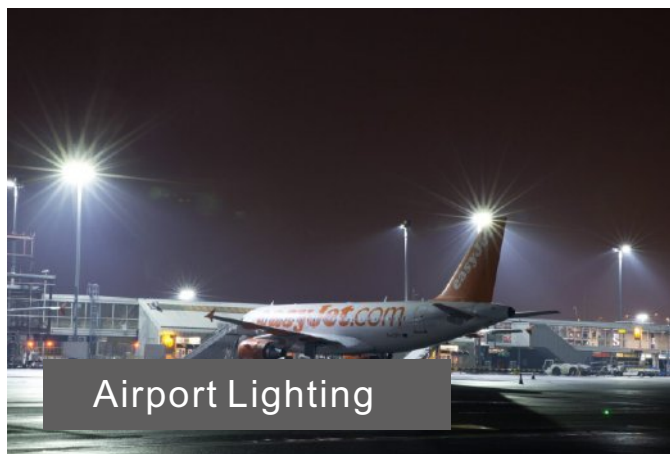


P50(135\*60°)

## Application



Wharf Lighting



Airport Lighting



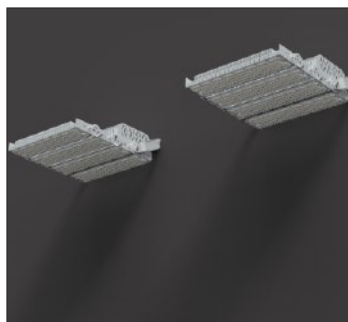
Golf Lighting



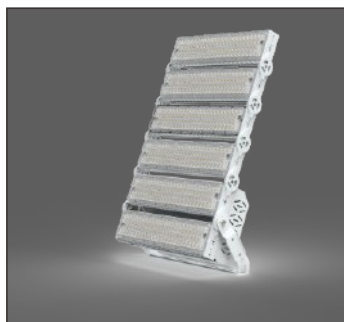
Stadium Lighting

For area lighting for interior and exterior applications:  
airport, golf course, factories, plants, warehouse, exhibition halls, gym, seaport, highway, high mast lighting and etc.

## Installation



Wall Installation

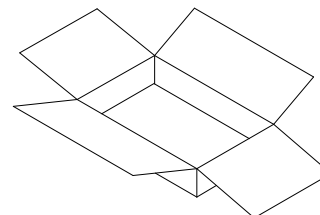
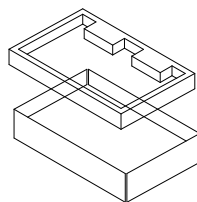
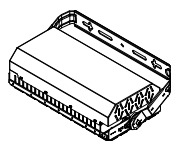
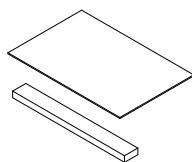


Ground Installation



Pole Installation

## Package details



Wattage

400W/480W

Size of Box

61.2x40.8x23.7cm

Weight

10.5Kg

Box Quantity

1PC